

2023 Covington Division III Sectional Wrestling

Saturday February 25th

- 7:30 – 8:00 am** Teams arrive and enter the **Elementary/Jr High General Admission door**
- 8:00 am** Weight- ins at Elem/Jr High Gym by weight class starting at 106 lbs
- 9:15 am** Doors open to public
- 10:00 am** Championship round 1
- ~10:30 am** Championship Rd 2 mixed with Consi roundd 2
- ~12:45 pm** Break for workers/officials
- ~1:15 pm** Championship Semi's mixed with Consi round 3
- ~3:30 pm** Consi Semi-finals
- ~4:15 pm** Break for workers/officials
- ~4:45 pm** Championship finals for first place (no breaks – first open mat)
- ~5:30 pm** Consolation Finals for 3rd and 5th place wrestled simultaneously (no breaks – first open mat)

There are no awards at sectional level, however the champion will receive a bracket.

District pairings will be posted at www.baumspage.com/wr by noon on 2/26/23

Admissions – tickets are only available via hometown ticketing: Go to www.ohsaa.org/tickets
Student (6 years old +) - \$6.00, Adults - \$8.00, Children under the age of five (5) are provided complimentary admission. Your admission ticket is good for the entire day, and can only be scanned once. We will use stamps for re-entry.

Coach/Team Check-in:

The Alpha-Master Roster and the wrestler weigh-in sheet must be provided to the tournament manager prior to starting the tournament.

Passes:

A pass for competing wrestlers will be included in the coach's envelope which can be picked up upon arrival **at the Elementary/Jr High General Admission door**. The competitor's pass will be collected upon team entry. If the wrestler leaves the building, make sure they know to get a hand stamp, otherwise they will need to purchase a hometownticket to re-enter. If you bring wrestlers who do not compete, they must purchase a hometownticket for admission, or use the School Administrator pass (see below). After team check-in is complete, we will shut down the pass gate. All entry/re-entry will be through the general admission doors.

Each school is permitted One (1) Head Coach pass in the form of a wristband. Each school will be allowed additional people based on number of competitors—one to six (1-6) competitors will receive four (4) wrist bands, seven to ten (7-10) competitors will receive five (5) bands, and eleven to fourteen (11-14) will receive six (6) bands. Wristbands will be included in the coach's

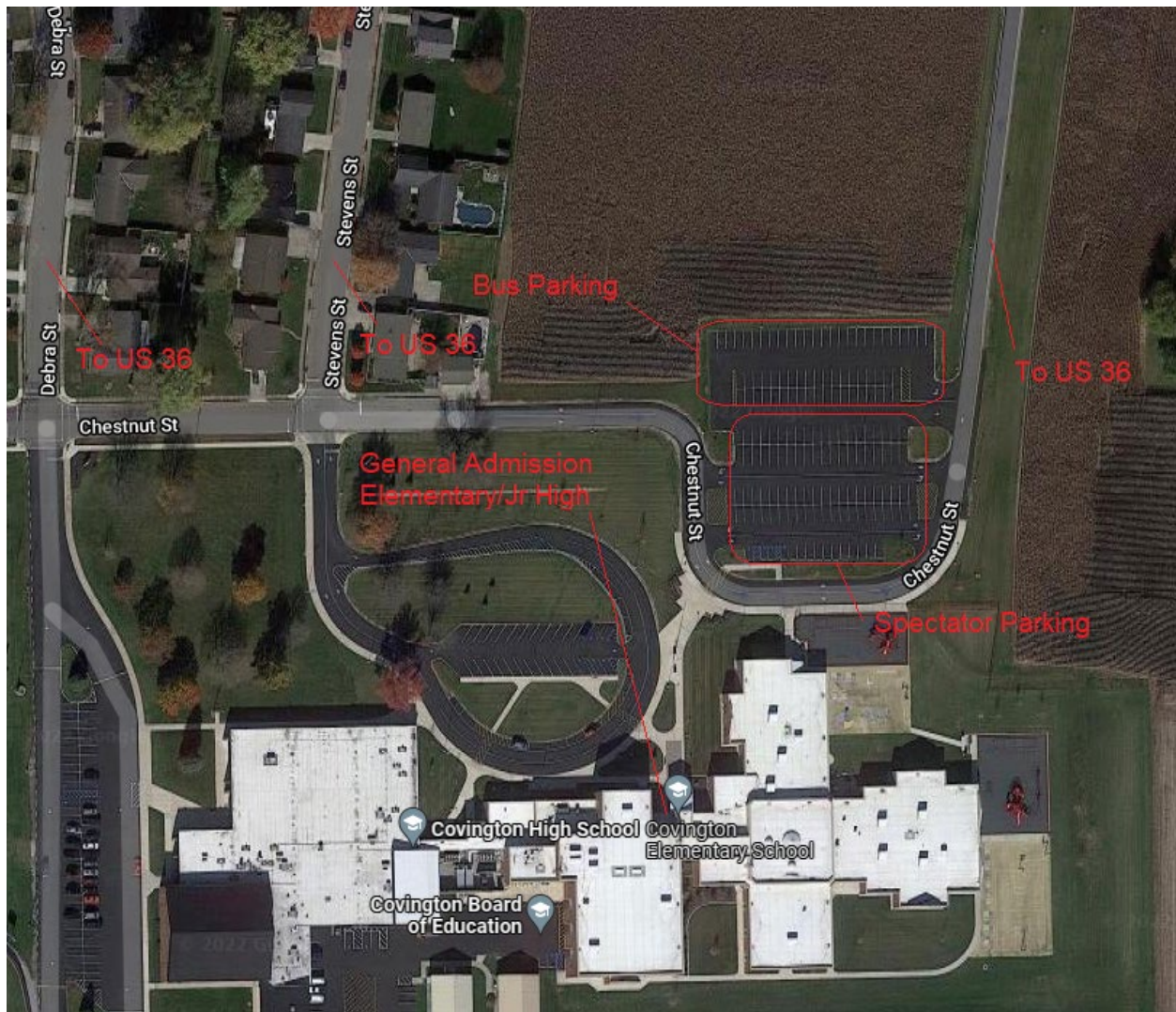
envelope. Wristbands are for coaches, stats, managers, and support personnel. Wrist bands must be worn on the wrist and shown to the admissions personnel to gain entry.

Cheerleaders – A maximum of six (6) in uniforms, must be accompanied by an advisor.

School Administrators Passes: Each participating school will receive complimentary admission for eight school administrators, digitally, through HomeTown Ticketing. One digital code will be provided to each school. Each code will have eight tickets attached to the code. The same code will be utilized, as a school advances in the tournament. There is no admittance without a QR code from HTT. These are for the AD to use for Superintendents, Principals, or whomever they see fit. You may want to inform your bus driver of this prior to departure.

Bus Parking Information:

Busses drop wrestlers off at Board of Education Door #34. After drop-off we request the bus park in the overflow lot, just to the north of spectator parking (see map below).



Weather Contingency:

Schools participating in wrestling tournaments and reside in a county that experiences a Level Two (2) or Level Three (3) weather emergency, that SITE (tournament) will be postponed. In Covington's case, the postponement will be one day. Tournament manager will contact the District Board and make every effort to personally contact each schools coach, athletic director, or principal. Schools are encouraged to make use of the Board website www.swdab.org for updated information regarding postponements and cancellations.

Hospitality (at Concession Stand):

Your coach's packet will contain sets of hospitality tickets for a brunch, and a dinner. Present your ticket at the **concession stand** to redeem your food/drink. The number of tickets in a set is based on participating wrestlers as follows:

- 2 for 1-6 participating wrestlers
- 3 for 7-10 participating wrestlers
- 4 for 11+ participating wrestlers

Concessions:

Concessions will be provided. No outside food for spectators will be permitted. Each wrestler may pack their food for the day, but no coolers or warmers are permitted.

Professionalism of coaches:

It is the moral obligation of all Ohio Wrestling Coaches to conduct themselves in a manner that reflects credit upon their high school, their profession and themselves. Personal grooming and appropriate dress is a standard of professionalism. **The wearing of T-shirts and warm-ups (top or bottom), head wear and similar apparel are not considered suitable attire for coaches during the OHSAA Sectional, District or State Wrestling Tournaments and therefore are prohibited.** Coaches are required to wear dress slacks or khakis, a shirt with a collar, and appropriate footwear, such as sneakers, dress shoes, etc. Flip flops and sandals are examples of inappropriate footwear. Coaches who are inappropriately dressed will not be allowed on the competition floor. Moral obligation and ethical conduct are part of winning and losing. Good sportsmanship, appearance, honor and concern for the well-being of the competitors should be placed before all else. The Rules have been established in the spirit of this statement.

Miscellaneous:

- Failure to show-up for tournament contest / refusal to finish contest which has been started and suspended for any reason is a fine of \$150.00 plus cost of officials, site expenses, and team expenses incurred by opposing team.
- Wrestlers must be ready when called to mat.
- Locker room space is very limited. Some wrestlers will need to share a locker. It is recommended that wrestlers bring a lock to secure their belongings.
- State regulation can be found on the OHSAA website.

Manager Contact Information:

Brad Hall

Cell: 937-238-0915

Email: bhall@hartzellprop.com